




# Rules governing data handling (Oktober 2015)


The following requirements enable smooth operation in the production of your print products.

## Possible programs:

### Open files:

-  Adobe Photoshop Version CC
-  Adobe Illustrator Version CC
-  Adobe InDesign Version CC

### Closed files:

-  Adobe Acrobat Version DC
- \* High resolution PDFs according to PDF/X3 standard.
- On request you can also receive our Acrobat Distiller settings.
- \* preferred

Subsequent corrections in the supplied PDF files, we can make with the program **PitStop v 13** against payment.

## Resolution and image formats:

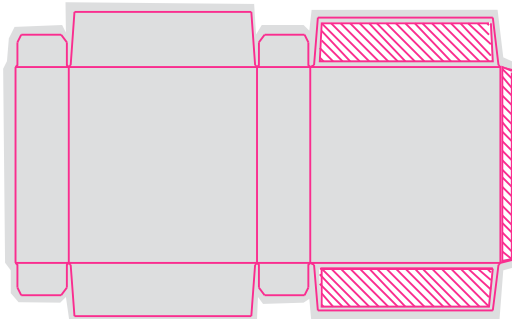
- Images 300 dpi, logos and line drawings 900-1200 dpi
- EPS, TIFF and JPEG (only in maximum quality)
- Color space must be **CMYK**, no RGB

## Other defaults:

- Please use the obligatory size from the digital cutting outlines prepared by us for register-true lithographic production (Please request!) - **not from** specimen!
- The required trapping over the gross size of the outline should be at least 3 mm, in case of lined flute at least 5mm. Outside areas should be transparent.

## Special features with pasted packaging:

- Marked adhesion areas (hatched fields, see sketch) **must** be kept free of colors.



## Color-accurate proofs:



- For color matching while printing a color-accurate digital-proof is required in accordance with ISO standard.

Without providing a color-accurate proof no warranty claims for the color accuracy of the printed object can be accepted. If you wish, we can (with test certificate) create these proofs for you. We will gladly make you an offer.

## Barcodes:



We can only assume responsibility for codes corresponding to the CCG standard. If you are unable to create such a code please set the code number at the respective place - we will create the correct code against payment.

There should be sufficient contrast between the background color and encoding. Left and right Light Zone must be adhered.

# Rules governing data handling

## General:

- The total color layout should not exceed 280%.
- Do not use or store any color management and raster settings in the image files.
- It is absolutely necessary to supply all images, logos and line files of the document.
- Please enclose the used fonts or convert all texts into character paths.
- Line weights should be at least 0.15 mm.
- In order to minimize register faults, text or image elements should have a distance of at least 2 mm to all cutting rules, for corrugated packaging at least 4 mm.
- Do not create trapping or under-filling in the document (we will do this according to printing defaults).
- Special colors must be created as such and be marked with Pantone or HKS numbers. If you have your own colors requests, please supply color samples. **Colors which are not used must be removed!**
- **For the graphic designer:** If the data are transmitted by email, please make reference to the customer and the product. It is necessary to provide the name of a contact person with phone number for further questions.
- **Delivery of PDF files:** A low-resolution PDF file with die-cutting template, a print-optimised PDF file with no die-cutting template (with embedded text), a print-optimised PDF file with no die-cutting template (text converted into paths).  
**The PDF files must be displayed at the same page size in Acrobat.**

Please supply a color and text-binding proof for print control.

### One more note:

Please make sure that the data you deliver are virus-free and tested.

Thank you



### ❖ Please send your punching drawing to:

e-mail Leutershausen: w.assenbaum@fmsag.de

e-mail Krölpa: daten.kr@fmsag.de

### ❖ Please send your data to:

e-mail Leutershausen: mac@fmsag.de

e-mail Krölpa: daten.kr@fmsag.de

FMS AG Leutershausen

Druckereistraße  
D-91578 Leutershausen

Telefon: +49 (0) 98 23/88-0  
Telefax: +49 (0) 98 23/88-57

www.fmsag.de  
info@fmsag.de

FMS AG Krölpa

Schenkenhügel 5  
D-07387 Krölpa

Telefon: +49 (0) 36 47/46 98-0  
Telefax: +49 (0) 36 47/46 98-40

www.fmsag.de  
info.kr@fmsag.de